



COLONIAL HEIGHTS

A new community in Katy



Paul Taylor | (713) 575-8000

pt@citychoicegroup.com

Please Visit Our Model Home: 1522 Colonial Junction Dr. Katy TX 77493

CHOICE IS THE ULTIMATE LUXURY





COLONIAL HEIGHTS

QUICK MOVE-IN HOMES

1506 Colonial Gorge
~~\$386,700~~ **\$324,900**

The Post Oak
4 beds | 2.5 baths | 2 car garage
1,964 sq. ft.
AVAILABLE NOW

1508 Colonial Gorge
~~\$383,700~~ **\$324,900**

The Cypress B
4 beds | 2.5 baths | 2 car garage
2,031 sq. ft.
AVAILABLE NOW

1514 Colonial Gorge
~~\$384,700~~ **\$324,900**

The Post Oak
4 beds | 2.5 baths | 2 car garage
1,977 sq. ft.
AVAILABLE NOW

1518 Colonial Gorge
~~\$389,700~~ **\$334,900**

The Saddle
3 beds | 2.5 baths | 2 car garage
1,916 sq. ft.
AVAILABLE NOW

1516 Colonial Gorge
~~\$381,700~~ **\$327,900**

The Cypress A
4 beds | 2.5 baths | 2 car garage
1,943 sq. ft.
AVAILABLE NOW

1520 Colonial Gorge
~~\$392,700~~ **\$324,900**

The Longhorn
3 beds | 2.5 baths | 2 car garage
2,079 sq. ft.
AVAILABLE NOW

1522 Colonial Gorge
~~\$384,700~~ **\$334,900**

The Post Oak
4 beds | 2.5 baths | 2 car garage
1,921 sq. ft.
AVAILABLE NOW

1524 Colonial Gorge
~~\$379,700~~ **\$329,900**

The Cypress B
4 beds | 2.5 baths | 2 car garage
2,031 sq. ft.
AVAILABLE NOW

24405 Colonial Willow
~~\$383,700~~ **\$324,900**

The Post Oak
4 beds | 2.5 baths | 2 car garage
1,977 sq. ft.
AVAILABLE NOW

continued

Paul Taylor | (713) 575-8000

pt@citychoicegroup.com

Please Visit Our Model Home: 1522 Colonial Junction Dr. Katy TX 77493

CHOICE IS THE ULTIMATE LUXURY





CITY HOMES
CHOICE

COLONIAL HEIGHTS
QUICK MOVE-IN HOMES

24404 Colonial Willow

~~\$367,700~~ **\$319,900**

The Juniper A
3 beds | 2.5 baths | 2 car garage
1,964 sq. ft.

AVAILABLE NOW

24407 Colonial Willow

~~\$394,700~~ **\$329,900**

The Longhorn
3 beds | 2.5 baths | 2 car garage
2,079 sq. ft.

24408 Colonial Willow

~~\$389,900~~ **\$314,900**

The Longhorn
3 beds | 2.5 baths | 2 car garage
2,079 sq. ft.

24410 Colonial Willow

~~\$364,700~~ **\$309,900**

The Juniper A
3 beds | 2.5 baths | 2 car garage
1,964 sq. ft.

1524 Colonial Junction

~~\$388,700~~ **\$329,900**

The Saddle
3 beds | 2.5 baths | 2 car garage
1,916 sq. ft.

AVAILABLE NOW

1526 Colonial Junction

~~\$391,700~~ **\$324,900**

The Longhorn
3 beds | 2.5 baths | 2 car garage
2,169 sq. ft.

AVAILABLE NOW

24405 Colonial Mound

~~\$367,700~~ **\$317,700**

The Juniper A
3 beds | 2.5 baths | 2 car garage
1,964 sq. ft.

Paul Taylor | (713) 575-8000

pt@citychoicegroup.com

Please Visit Our Model Home: 1522 Colonial Junction Dr. Katy TX 77493

CHOICE IS THE ULTIMATE LUXURY





CITY HOMES CHOICE



Paul Taylor
(713) 575-8000
 pt@citychoicegroup.com
 Please Visit Our Model Home:
 1522 Colonial Junction Dr.
 Katy TX 77493

CHOICE IS THE ULTIMATE LUXURY





COLONIAL HEIGHTS

COMMUNITY INFORMATION

Katy Independent School District

Robert King Elementary School

1901 Charlton House Ln, Katy, TX 77493
(281) 237-6850

Katy Junior High School

5350 Franz Rd, Katy, TX 77493
(281) 237-6800

Morton Ranch High School

21000 Franz Rd, Katy, TX 77449
(281) 237-7800

HOA Information

Management Company: Beacon Residential Management

Annual Dues: \$1,100

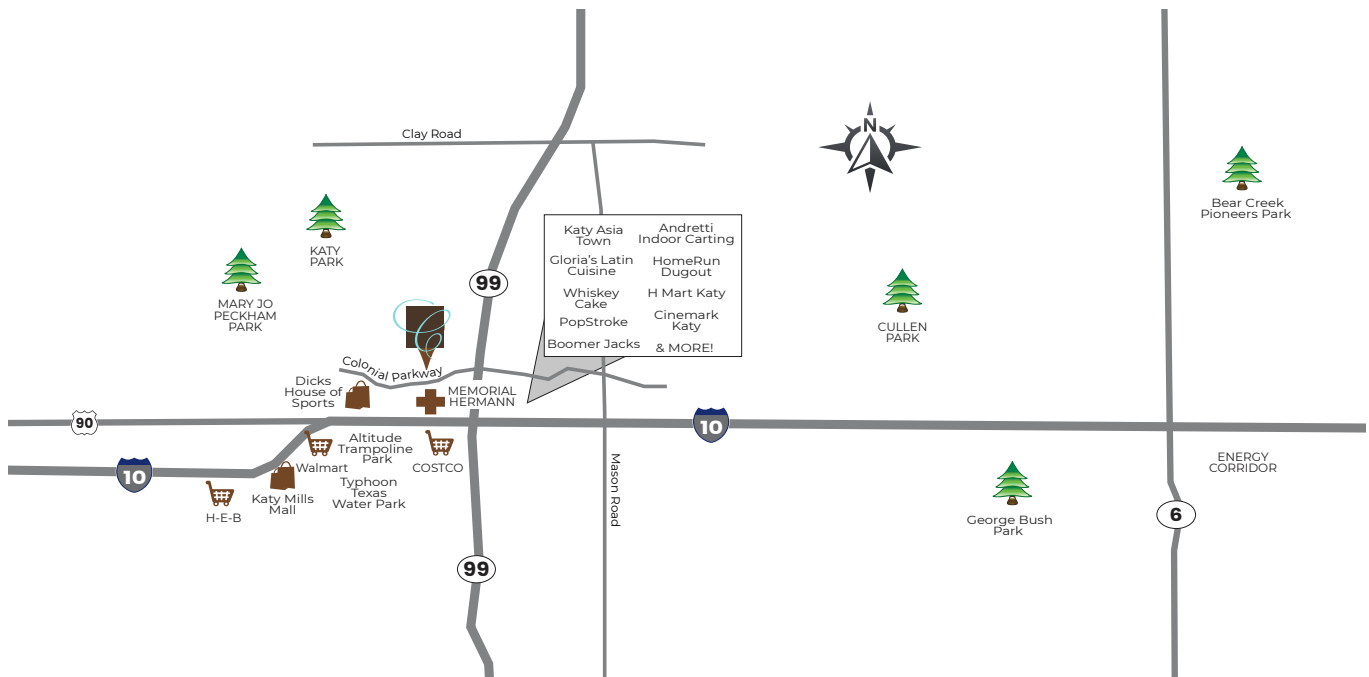
Capital Reserve Contribution: \$1,155 (one-time payment)
Includes: Front yard maintenance, community area maintenance including the gate, private trash, and water.

Points of Interest

- Katy Asiatown, H-E-B, Katy Mills Mall, Costco, and Memorial Hermann Katy Hospital all less than 10 minutes away
- Proximity to Grand Parkway (99) & I-10 for easy commuting

Tax Information

Total Tax Rate: 2.61% (2024)



CHOICE IS THE ULTIMATE LUXURY

* Information is deemed reliable but not guaranteed. Schools, tax rates, and HOA fees are subject to change.





COLONIAL HEIGHTS

FEATURES & SPECIFICATIONS

FIRST FLOOR (KITCHEN, DINING, LIVING ROOM):

- Engineered Swiss Flooring throughout First Floor
- Engineered Swiss Treads on Stairs
- Quartz Countertops
- Backsplash, White Subway Tile Backsplash
- Shaker Cabinets
- Powder Room with Pedestal Sink

SECOND FLOOR (BEDROOMS):

- Designer Plush Carpet with Padding

Master Bathroom:

- Tile, Bath & Shower Tile
- Freestanding Soaking Tub in All Units
- Glass Enclosed Shower
- Modern Chrome Plumbing Fixtures
- Undermount Dual Sink
- Quartz Countertops
- Shaker Cabinets

Secondary Bathroom:

- Tile Flooring in Shower
- Quartz Countertops
- Undermount Sink
- Modern Chrome Plumbing Fixtures
- Shaker-Style Cabinets
- Tub/Shower Combo

MECHANICAL SPECIFICATIONS :

Foundation:

- Engineered Post Tension Foundation
- 3,000 PSI Concrete
- Engineered Building Pads

Frame and Cornice:

- Engineered Structural Framing
- 2"x4" Stud Grade Fire Walls, Every 16" (+or-) O.C.
- Yellow Pine Ceiling Joints 16" (+or-) O.C.
- Yellow Pine Rafters, 16" (+or-) O.C.
- 7/16" OSB Roof Decking with TechShield Radiant Barrier
- 7/16" OSB Sheathing
- Engineered Wood Trusses per Floor
- 3/4" Tongue and Groove Subfloor
- Cem Plank Siding
- All Subfloor is Glued, Nailed and Screwed
- Windstorm per Plans and Codes

Windows:

- Vinyl/Aluminum Frame, Insulated (Double Pane), Clear Glass with Low-E

Ceiling Heights:

- Varies by Floor Plan

Roofing:

- 25 Year Roof Shingle

Air Conditioning and Heating:

- 3 Ton A/C on Smaller Plans (<1600 sf)
- 3.5 Ton A/C on Larger Plans (>1700 sf)
- High-efficiency Condensing Unit
- High-efficiency Furnace
- R-8/6 Silver Flex Duct in Attic
- Programmable Thermostats

Electrical:

- All Copper Wiring throughout the House
- GFI Safety Switches where Required by Codes
- 125 AMP Main Electric Panel
- All Other Electrical Wiring as per Floor Plans
- Recessed Can Lighting

Plumbing:

- CPVC Vents and Drain Pipes
- Insulated Exposed Water Lines
- (1) Water Heater
- Modern Chrome Plumbing Fixtures

Insulation:

<i>Area:</i>	<i>Material:</i>	<i>R-Value:</i>
Exterior Walls	Batt	R-13
Ceilings	Batt	R-38
Attic	Blown	R-8

Appliances:

- Dishwasher: Samsung
- Cooktop: Samsung
- Microwave: Samsung

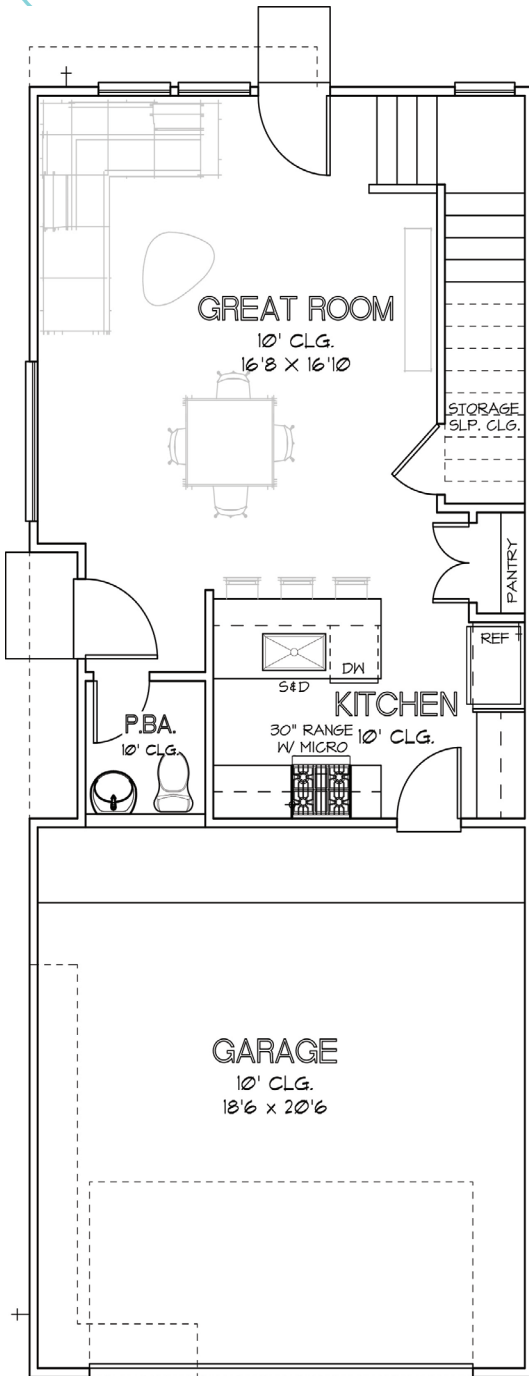
CHOICE IS THE ULTIMATE LUXURY



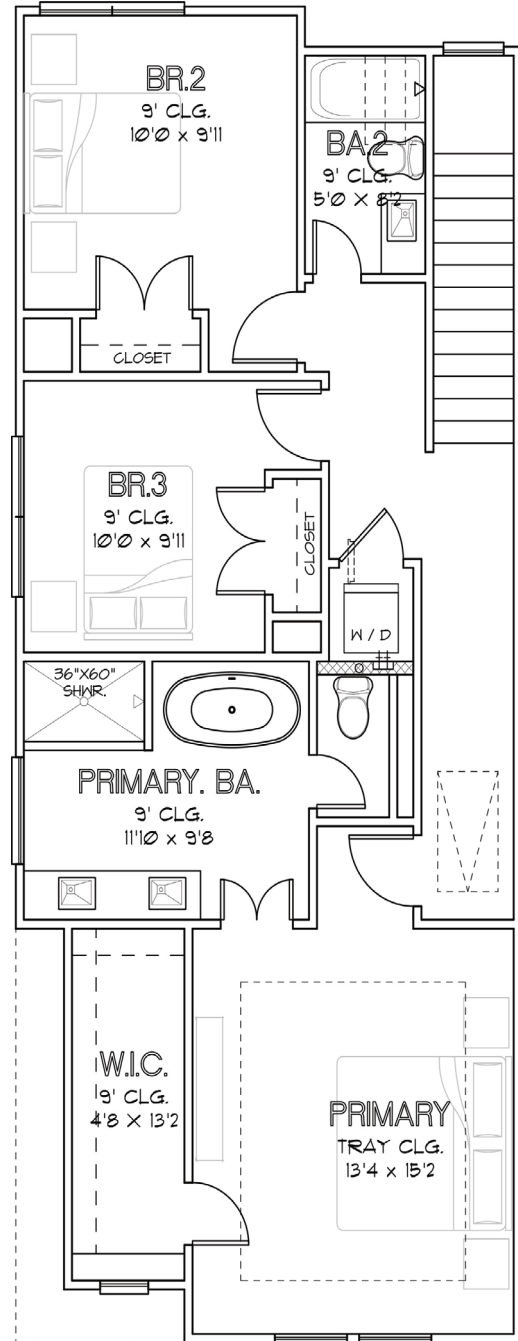


CITY HOMES CHOICE

COLONIAL HEIGHTS THE BLUEBONNET 1,504 SQ.FT.



FIRST FLOOR



SECOND FLOOR

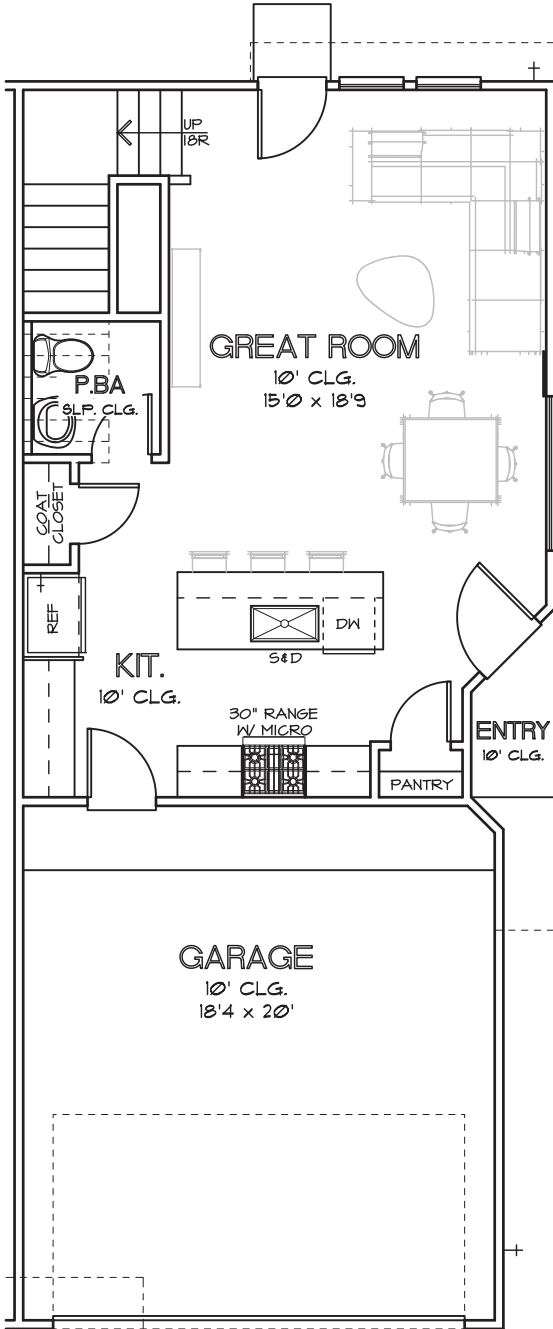
CHOICE IS THE ULTIMATE LUXURY



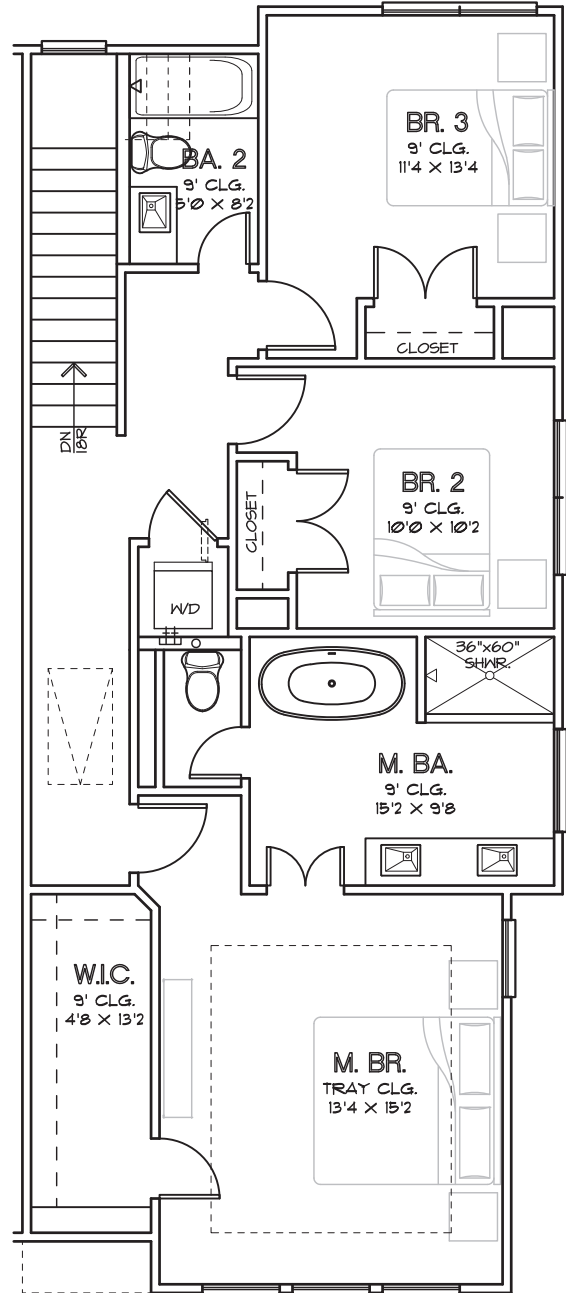


CITY HOMES
CHOICE

COLONIAL HEIGHTS
THE HICKORY A
1,513 SQ.FT.



FIRST FLOOR



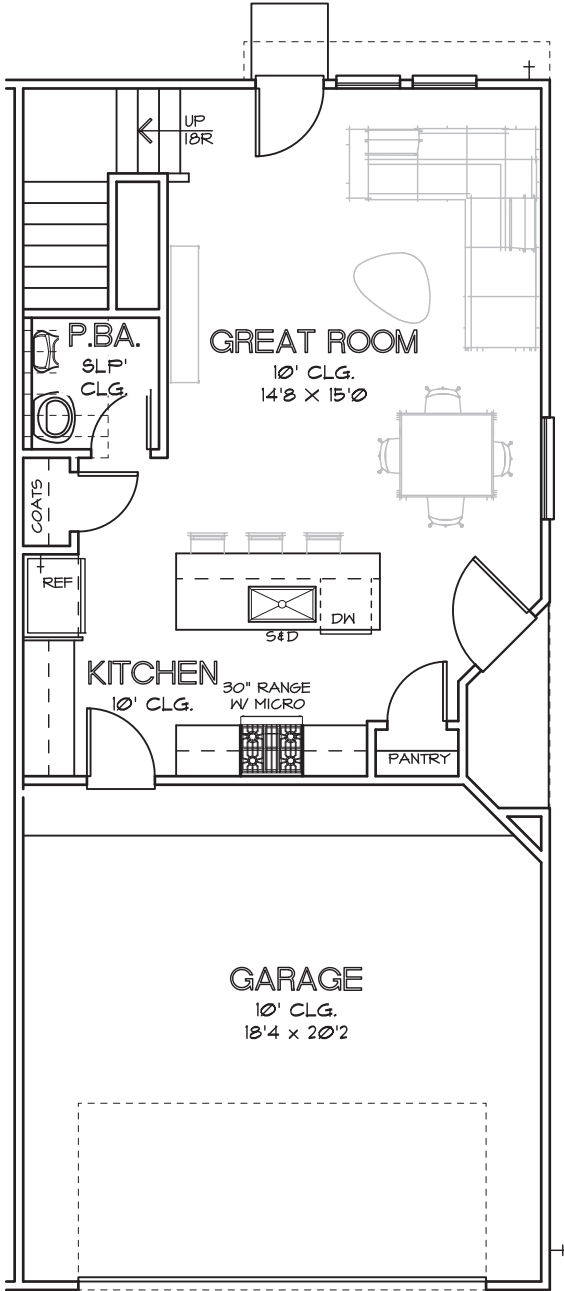
SECOND FLOOR

CHOICE IS THE ULTIMATE LUXURY

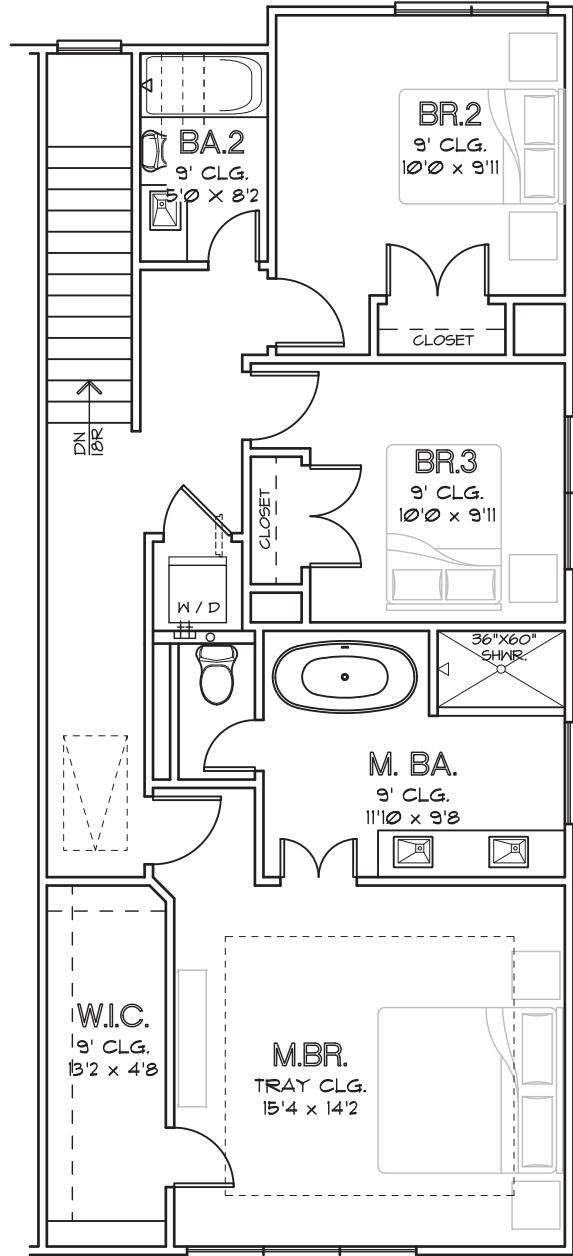


CITY HOMES
CHOICE

COLONIAL HEIGHTS
THE HICKORY B
1,524 SQ.FT.



FIRST FLOOR



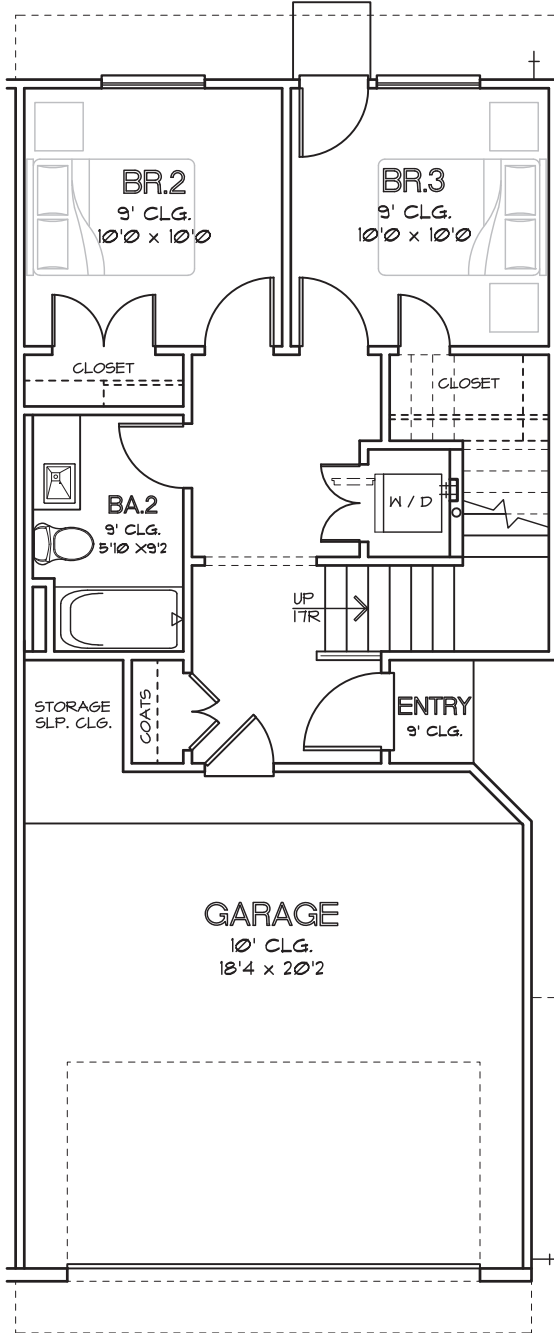
SECOND FLOOR

CHOICE IS THE ULTIMATE LUXURY

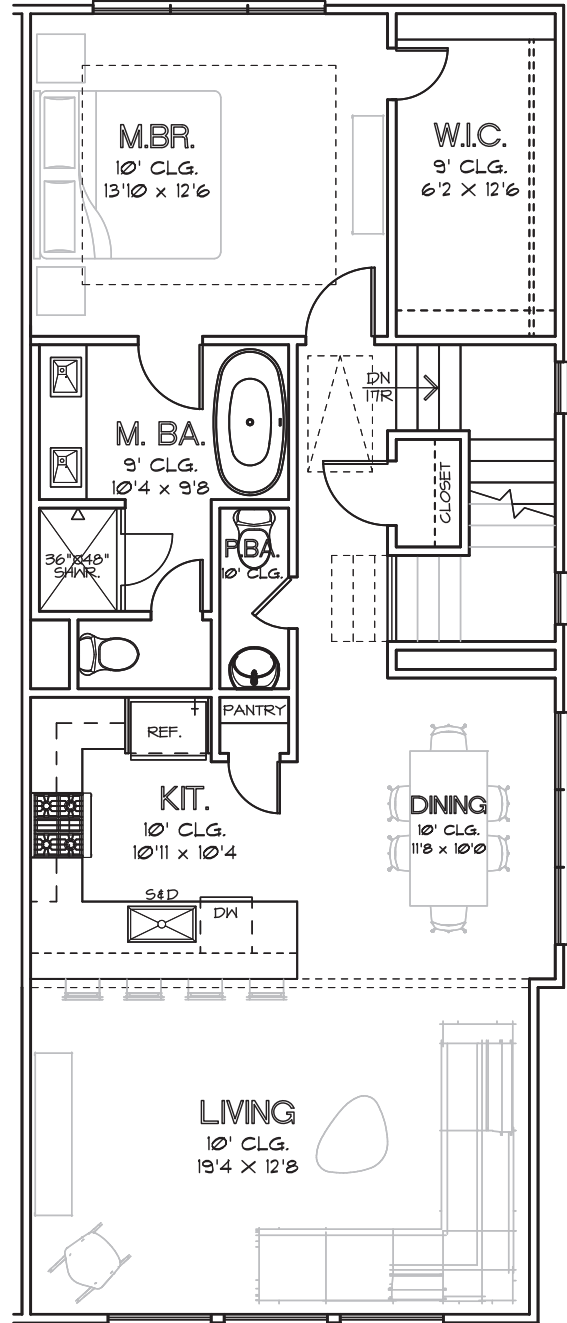


CITY HOMES
CHOICE

COLONIAL HEIGHTS
THE ELM
1,516 SQ.FT.



FIRST FLOOR



SECOND FLOOR

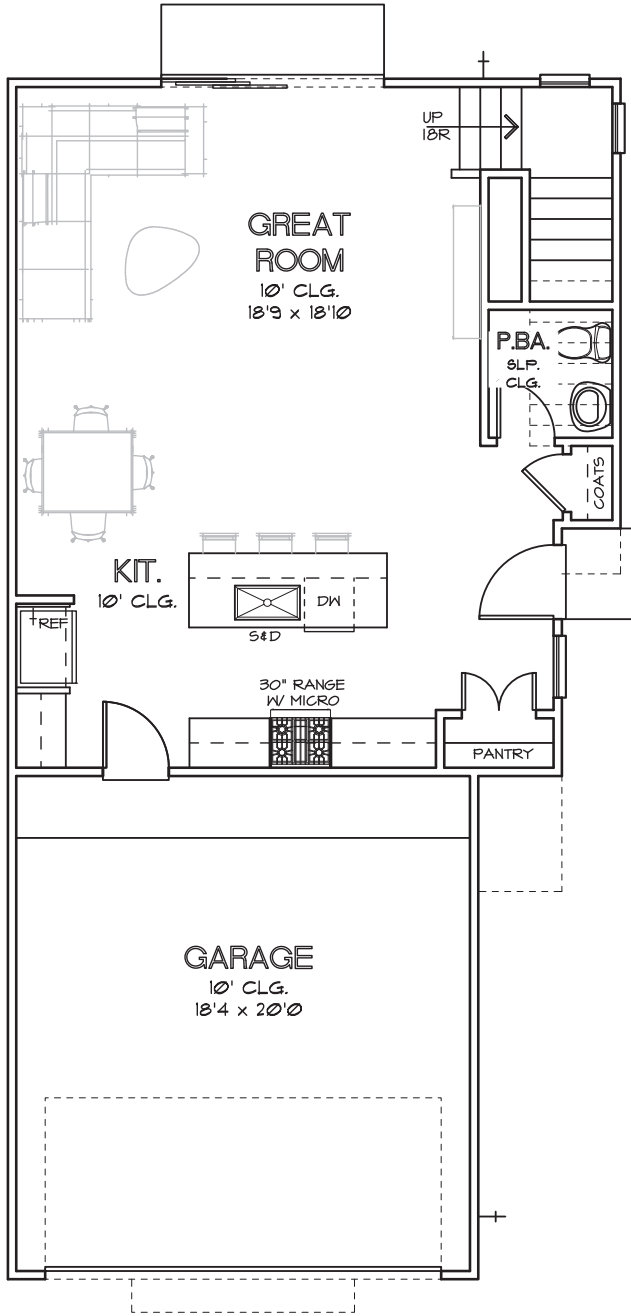
CHOICE IS THE ULTIMATE LUXURY



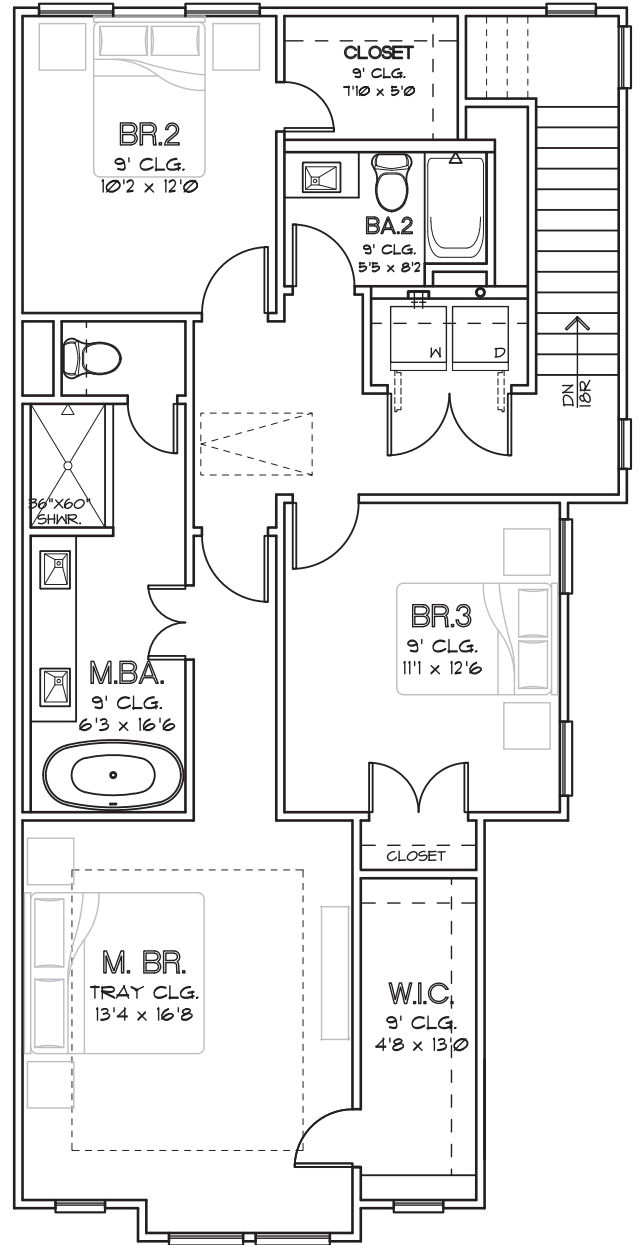


CITY HOMES CHOICE

COLONIAL HEIGHTS THE SYCAMORE A 1,700 SQ.FT.



FIRST FLOOR



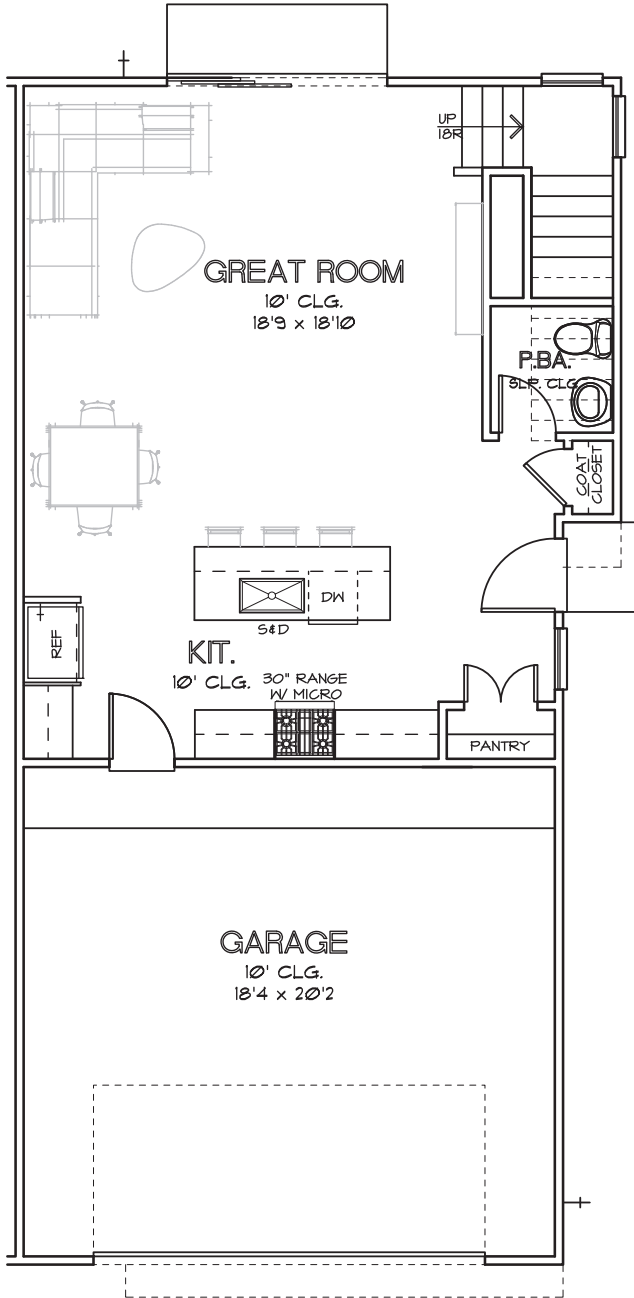
SECOND FLOOR

CHOICE IS THE ULTIMATE LUXURY

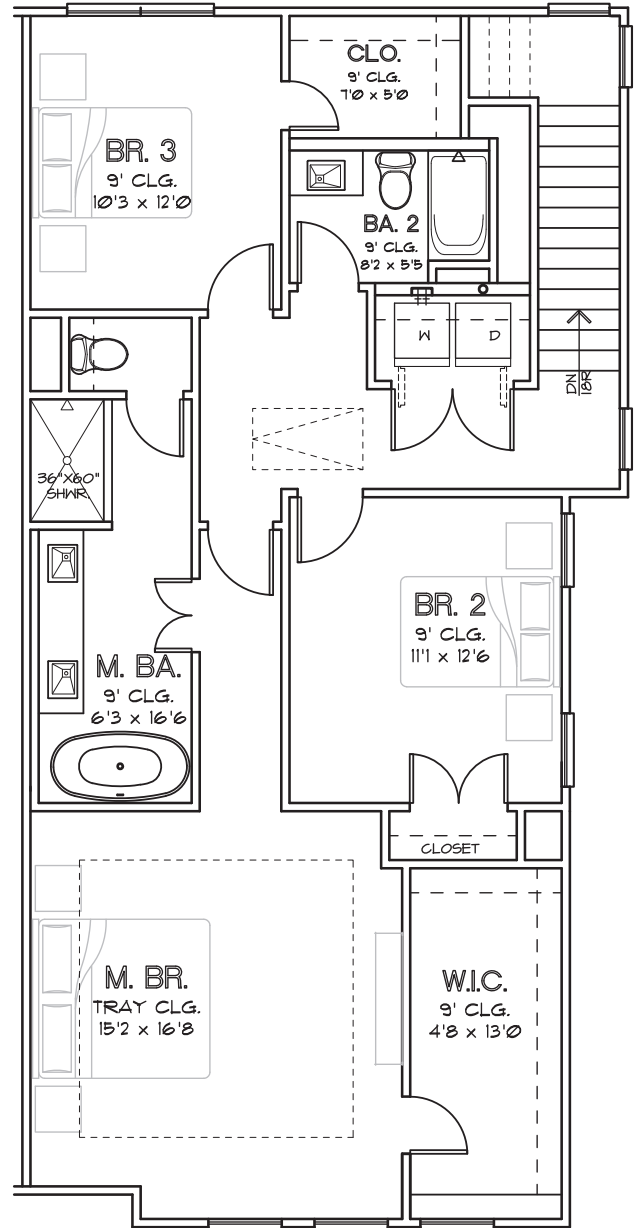


CITY HOMES
CHOICE

COLONIAL HEIGHTS
THE SYCAMORE B
1,765 SQ.FT.



FIRST FLOOR



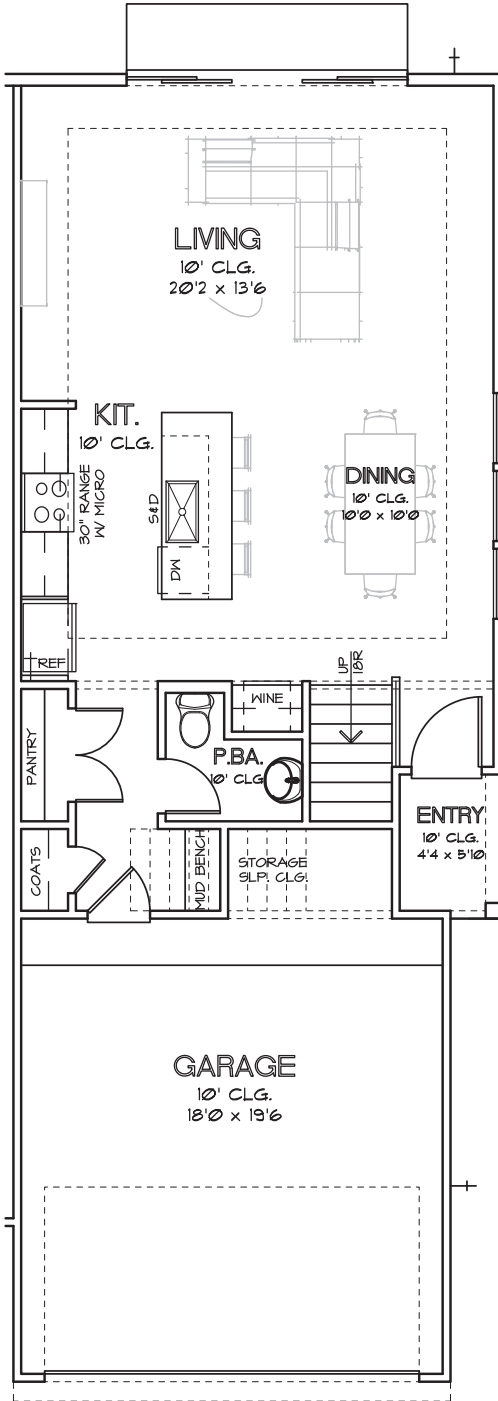
SECOND FLOOR

CHOICE IS THE ULTIMATE LUXURY

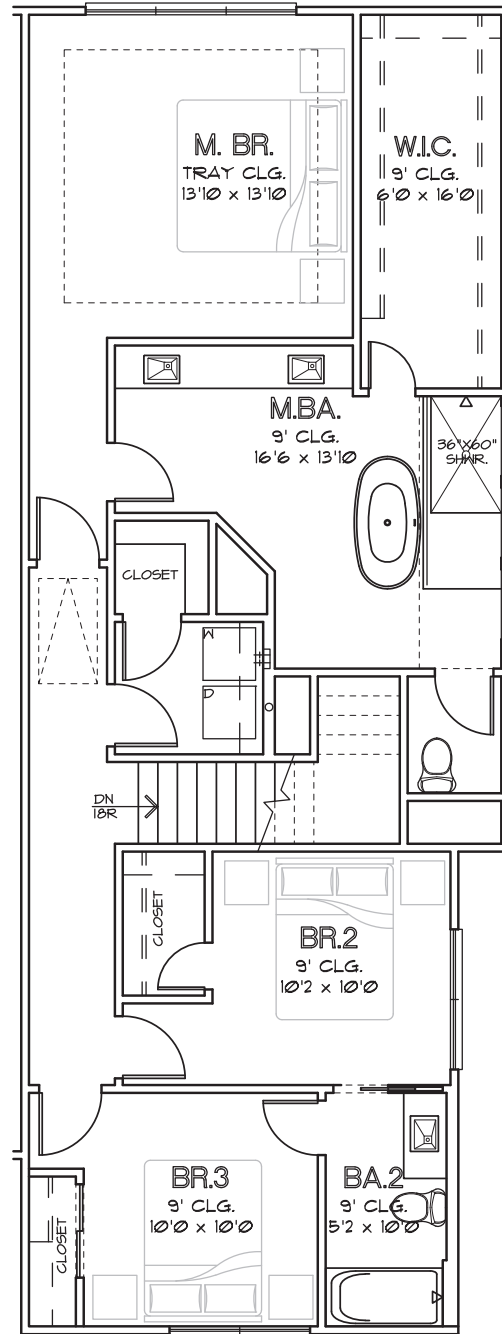


CITY HOMES CHOICE

COLONIAL HEIGHTS THE JUNIPER A 1,964 SQ.FT.



FIRST FLOOR



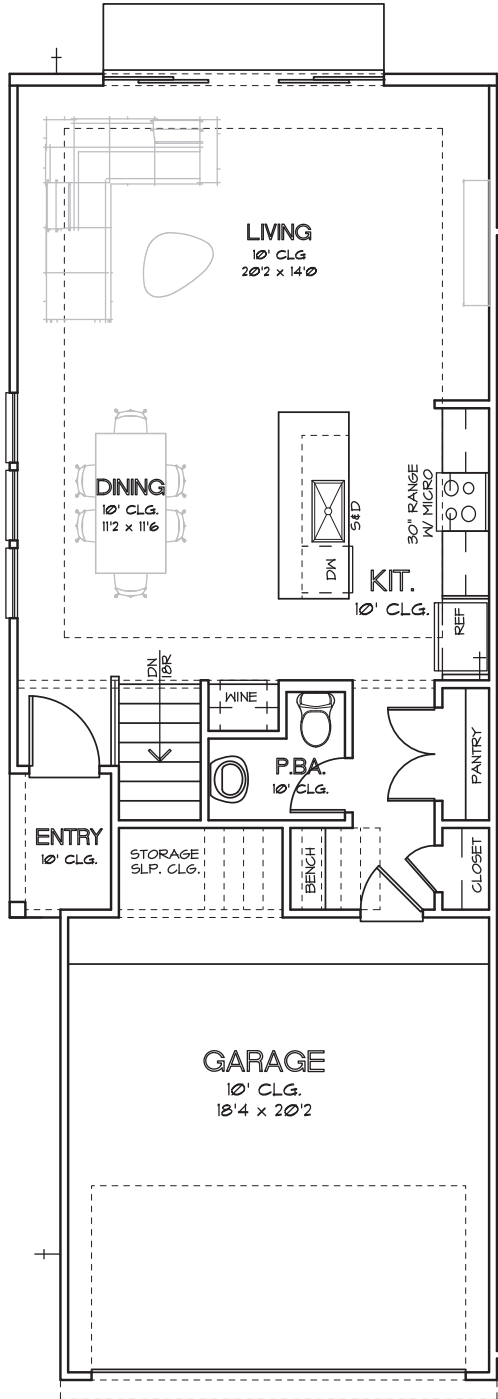
SECOND FLOOR

CHOICE IS THE ULTIMATE LUXURY

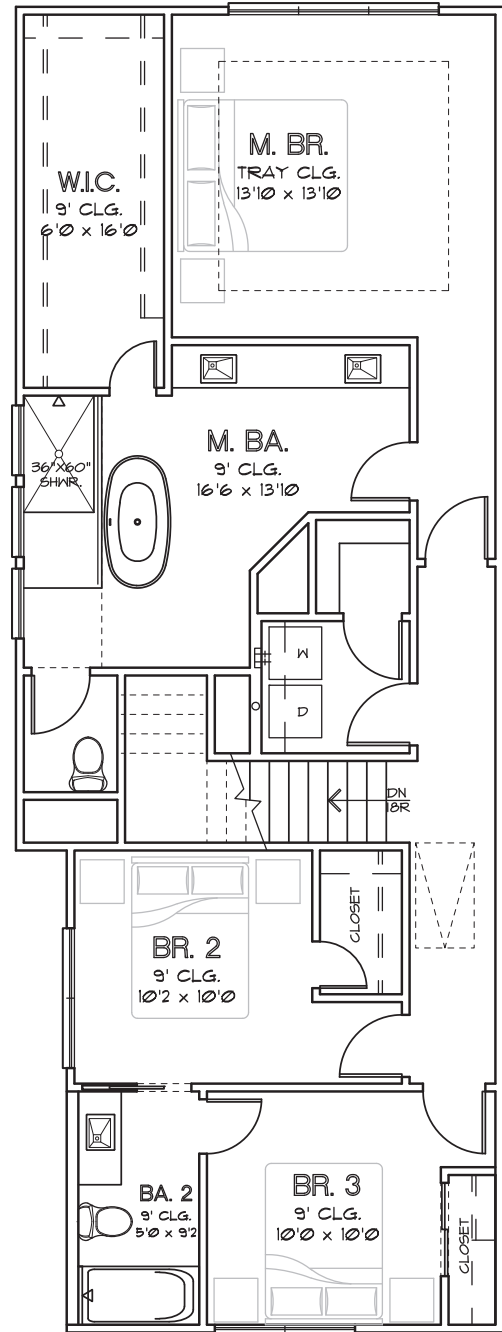


CITY HOMES CHOICE

COLONIAL HEIGHTS THE JUNIPER B 1,814 SQ.FT.



FIRST FLOOR



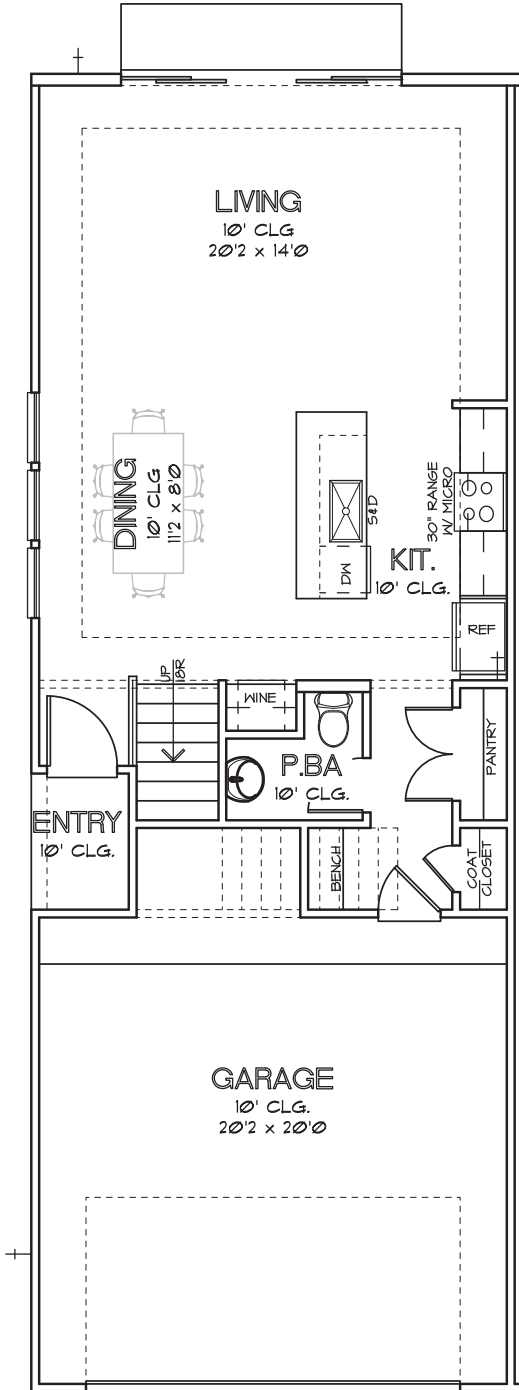
SECOND FLOOR

CHOICE IS THE ULTIMATE LUXURY

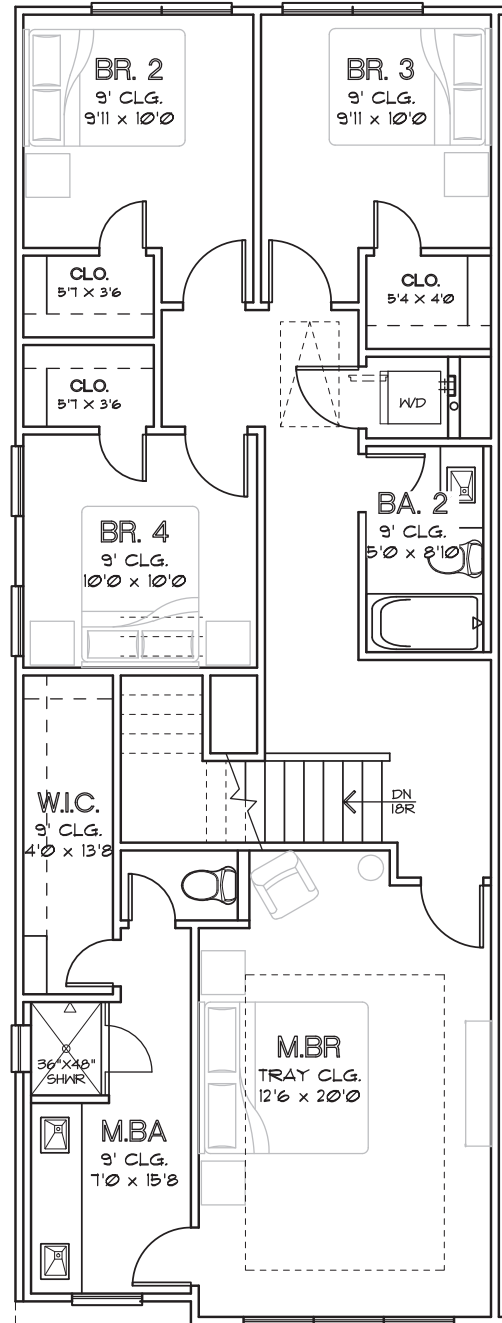


CITY HOMES CHOICE

COLONIAL HEIGHTS THE CYPRESS A 1,943 SQ.FT.



FIRST FLOOR



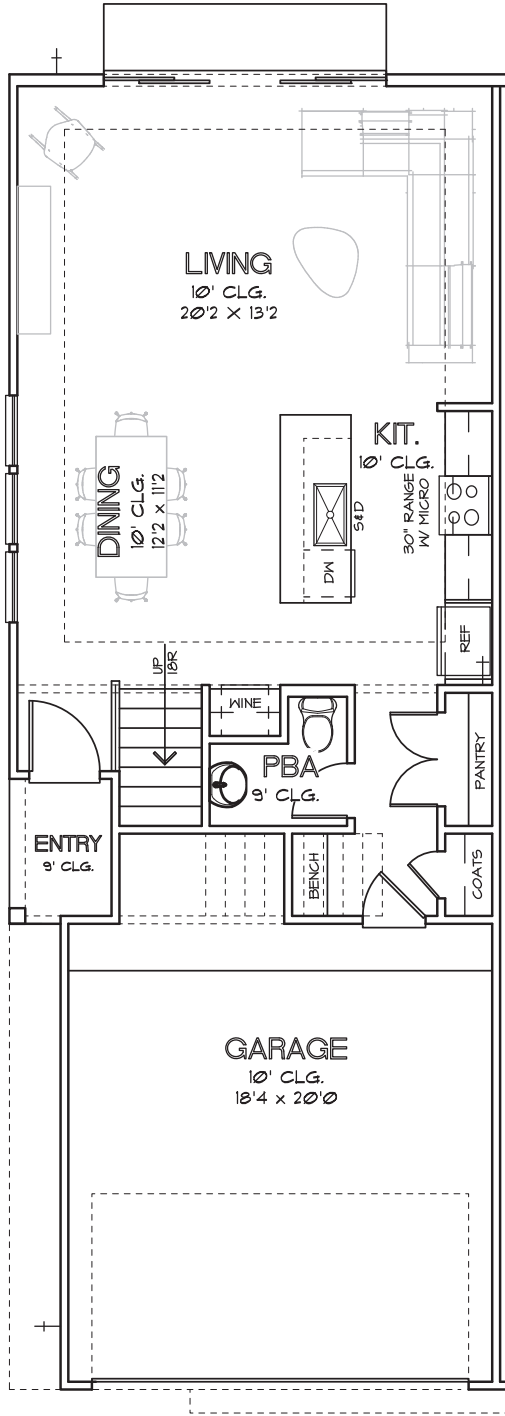
SECOND FLOOR

CHOICE IS THE ULTIMATE LUXURY

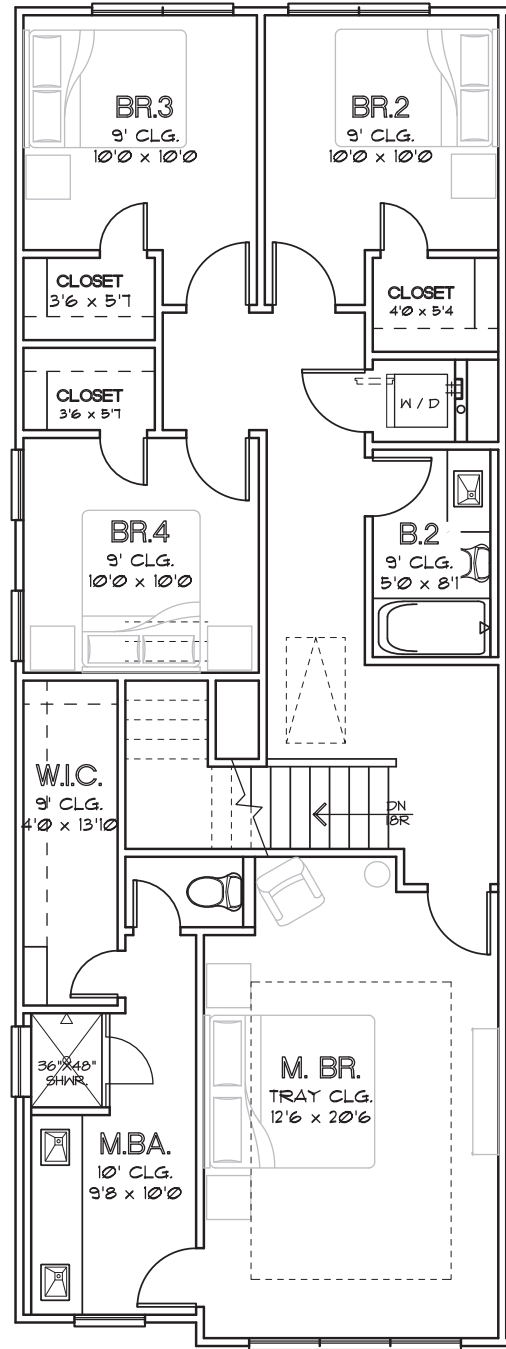


CITY HOMES CHOICE

COLONIAL HEIGHTS THE CYPRESS B 2,031 SQ.FT.



FIRST FLOOR



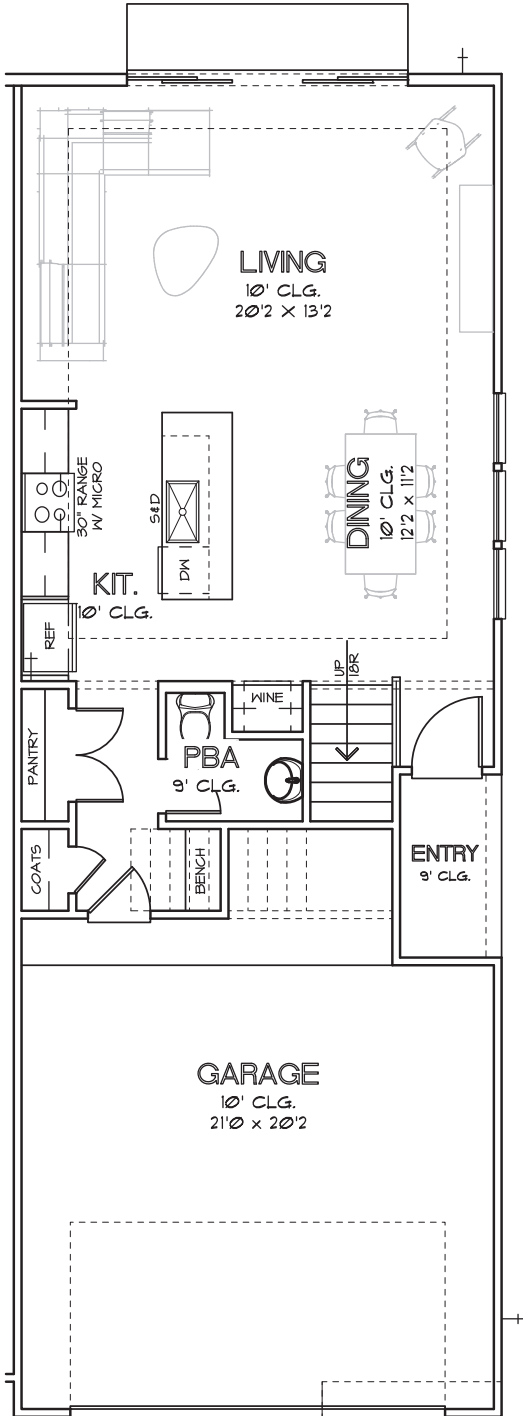
SECOND FLOOR

CHOICE IS THE ULTIMATE LUXURY

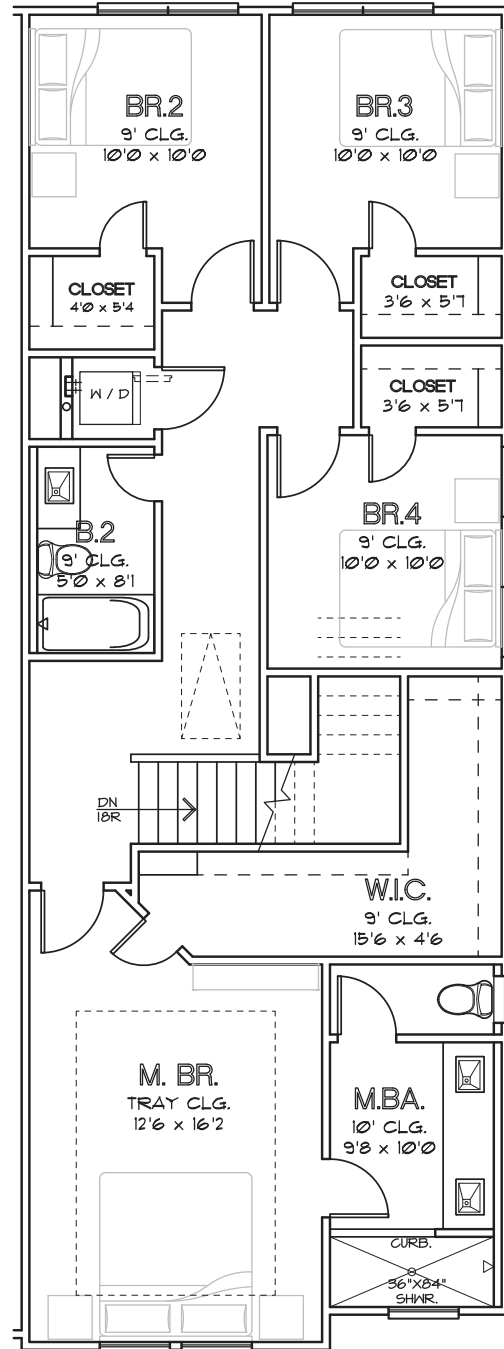


CITY HOMES CHOICE

COLONIAL HEIGHTS THE POST OAK 1,964 SQ.FT.



FIRST FLOOR



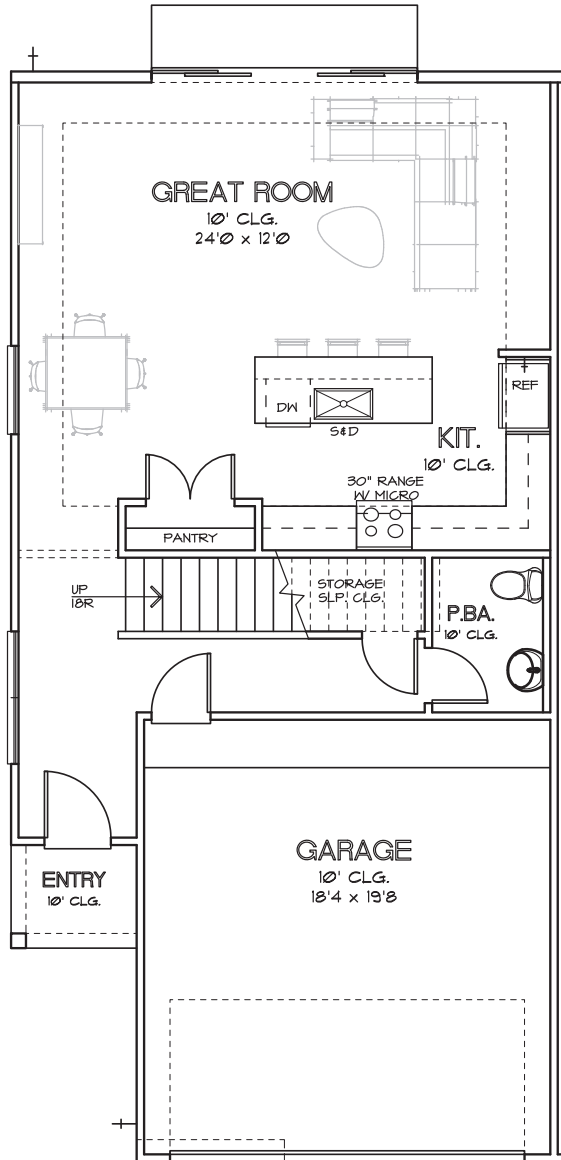
SECOND FLOOR

CHOICE IS THE ULTIMATE LUXURY

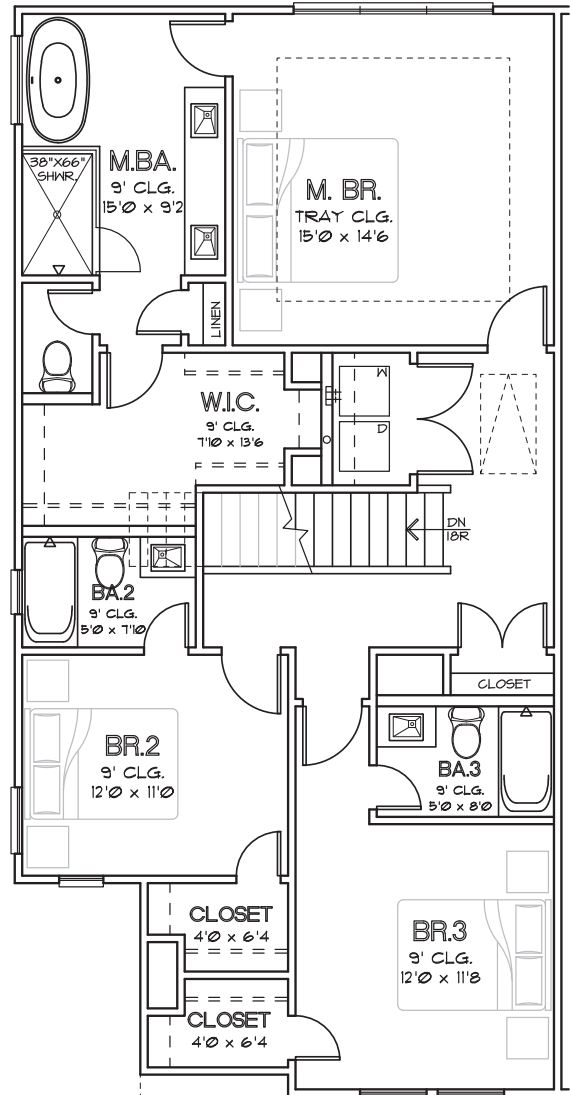


CITY HOMES CHOICE

COLONIAL HEIGHTS THE CEDARWOOD A 1,877 SQ.FT.



FIRST FLOOR



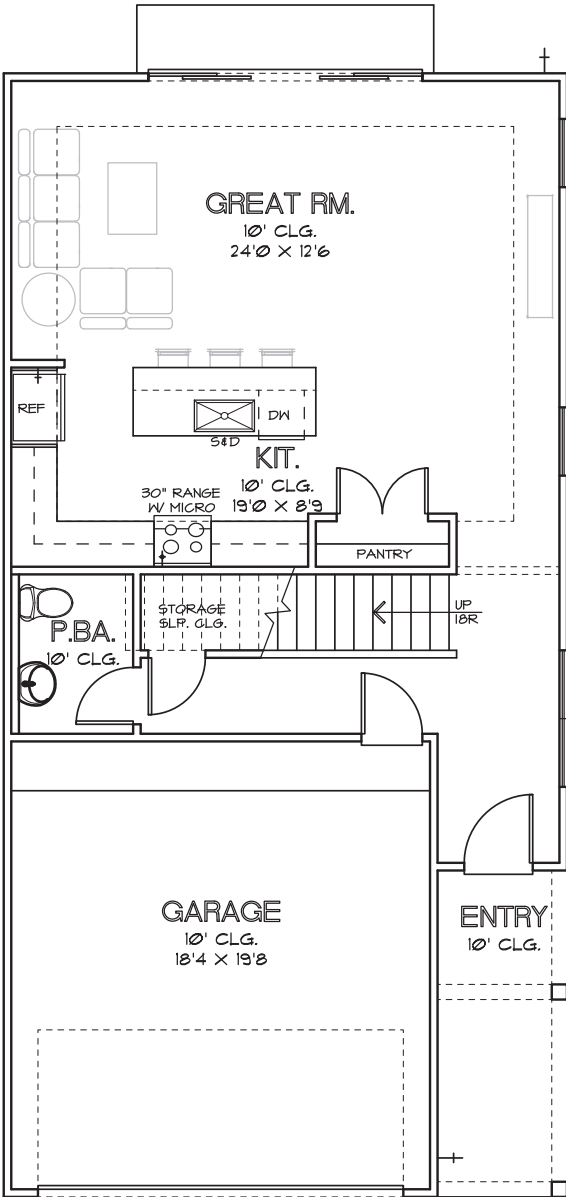
SECOND FLOOR

CHOICE IS THE ULTIMATE LUXURY

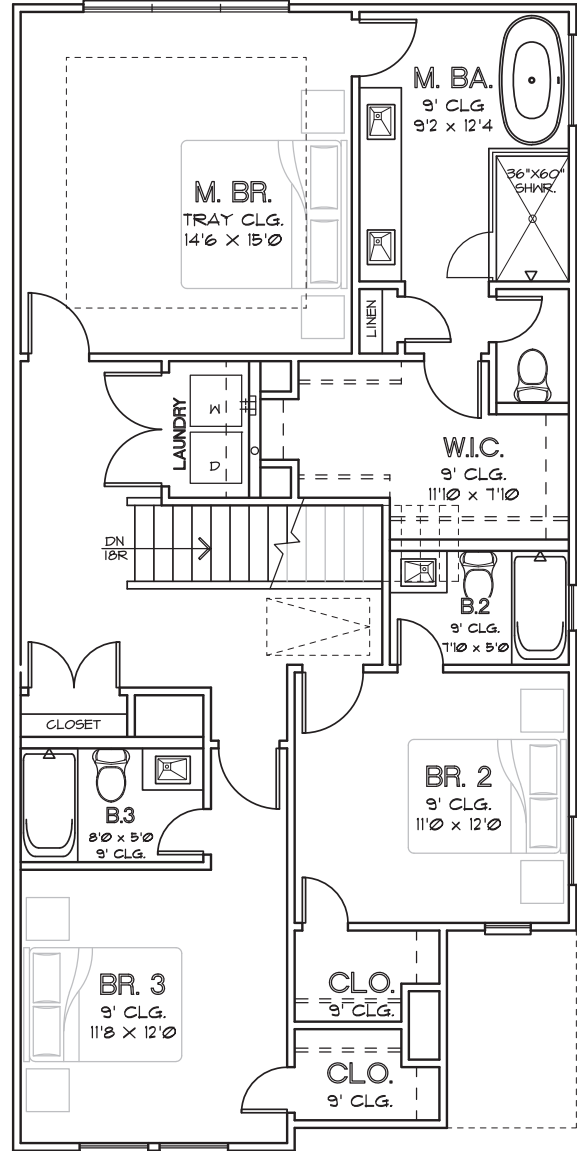


CITY HOMES
CHOICE

COLONIAL HEIGHTS
THE CEDARWOOD B
1,902 SQ.FT.



FIRST FLOOR



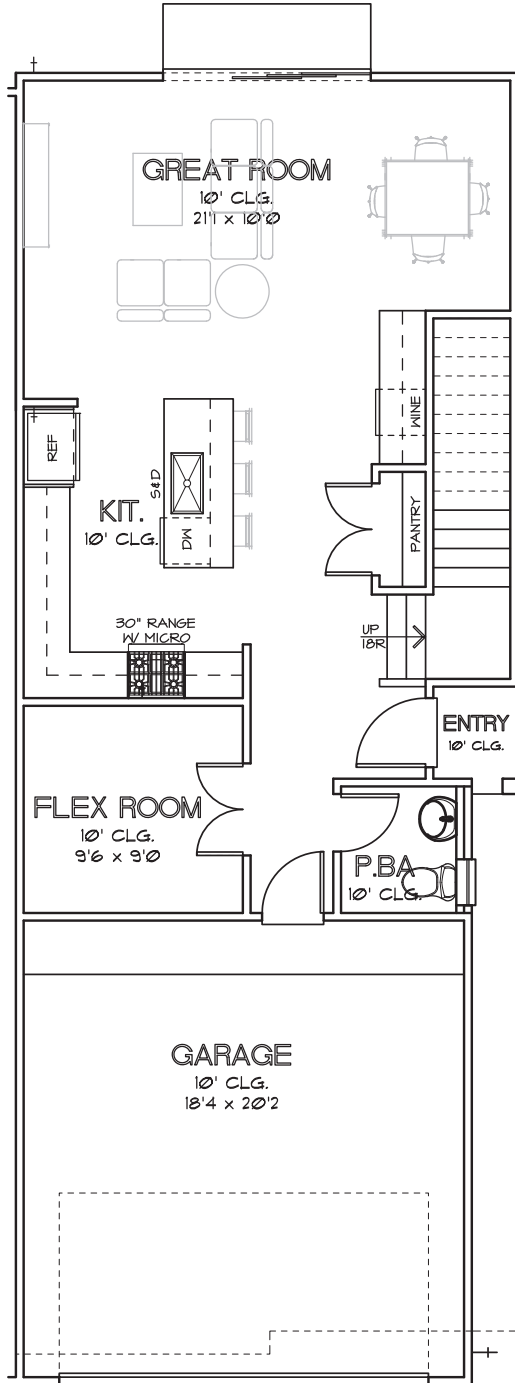
SECOND FLOOR

CHOICE IS THE ULTIMATE LUXURY

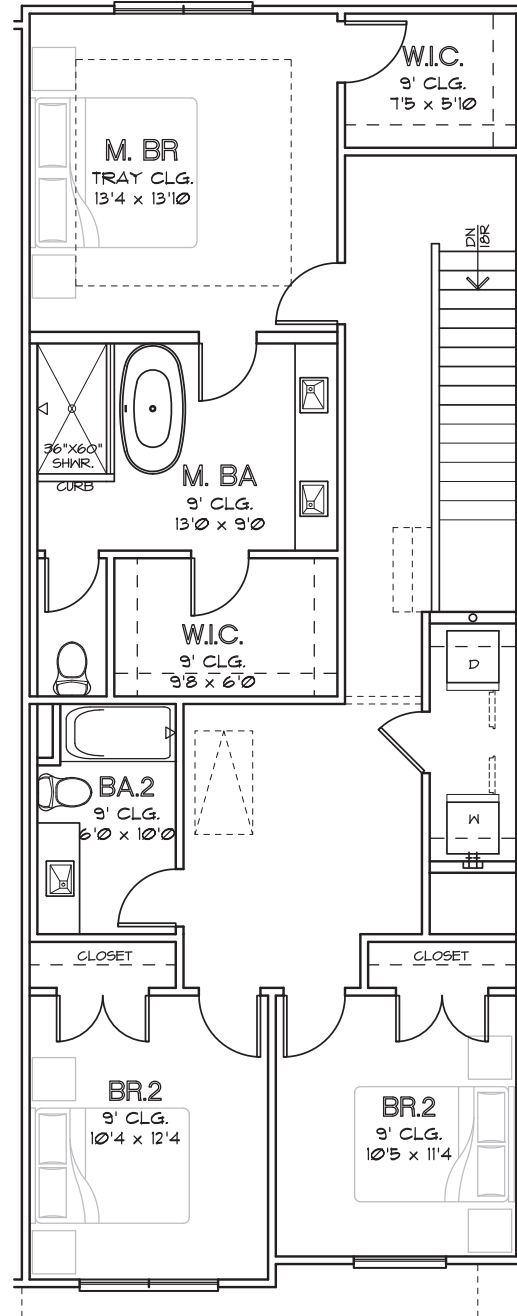


CITY HOMES CHOICE

COLONIAL HEIGHTS THE SADDLE 1,916 SQ.FT.



FIRST FLOOR



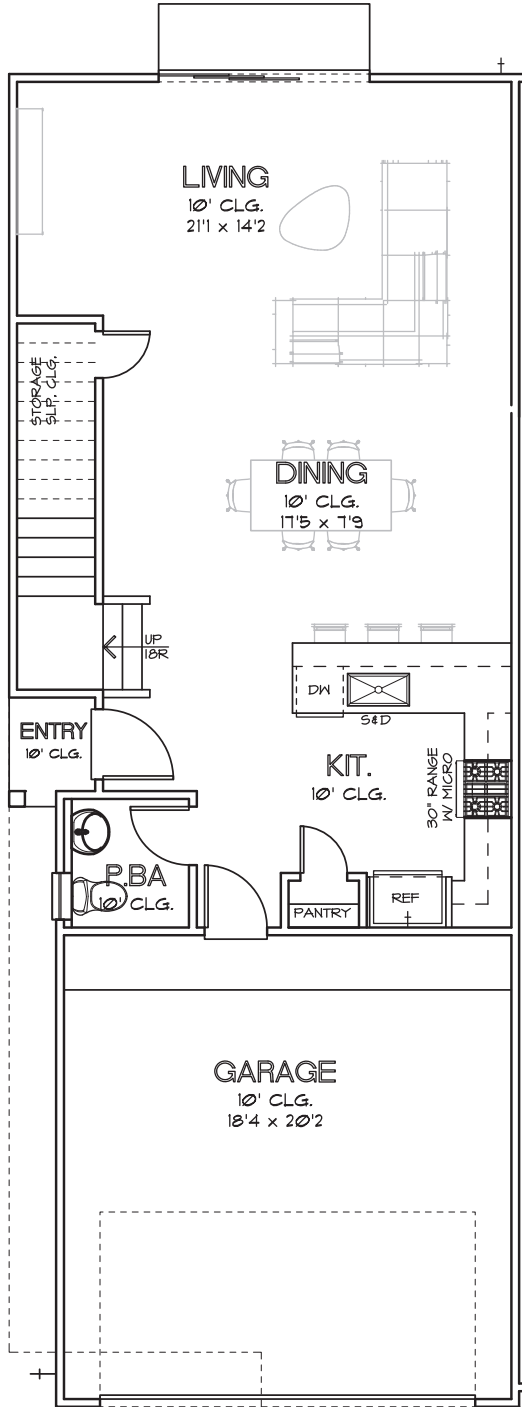
SECOND FLOOR

CHOICE IS THE ULTIMATE LUXURY

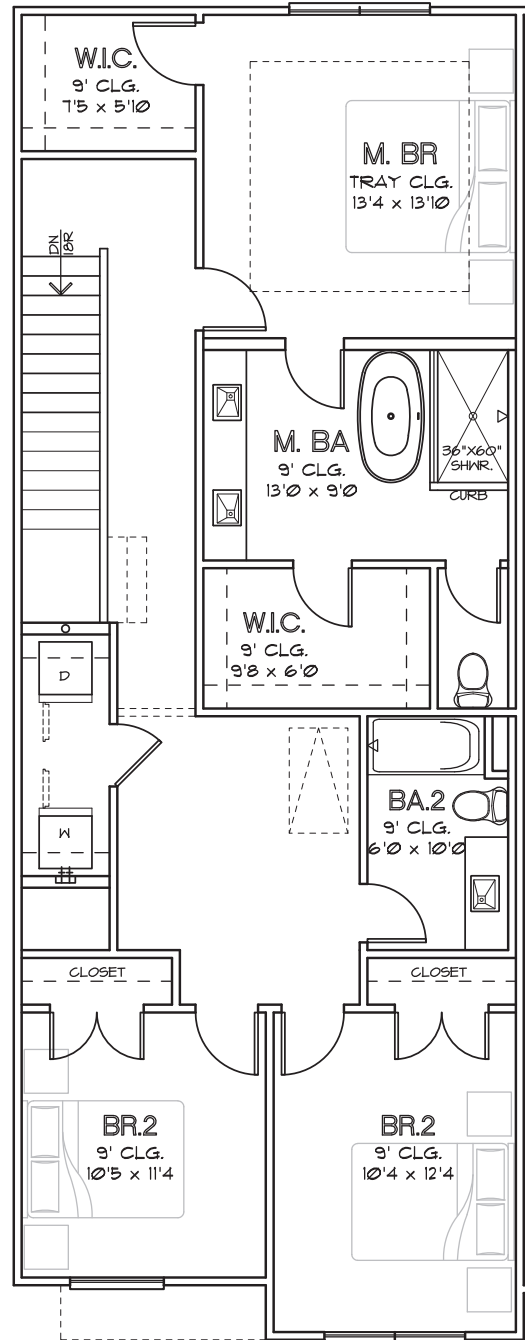


CITY HOMES
CHOICE

COLONIAL HEIGHTS
THE LONGHORN
2,079 SQ.FT.



FIRST FLOOR



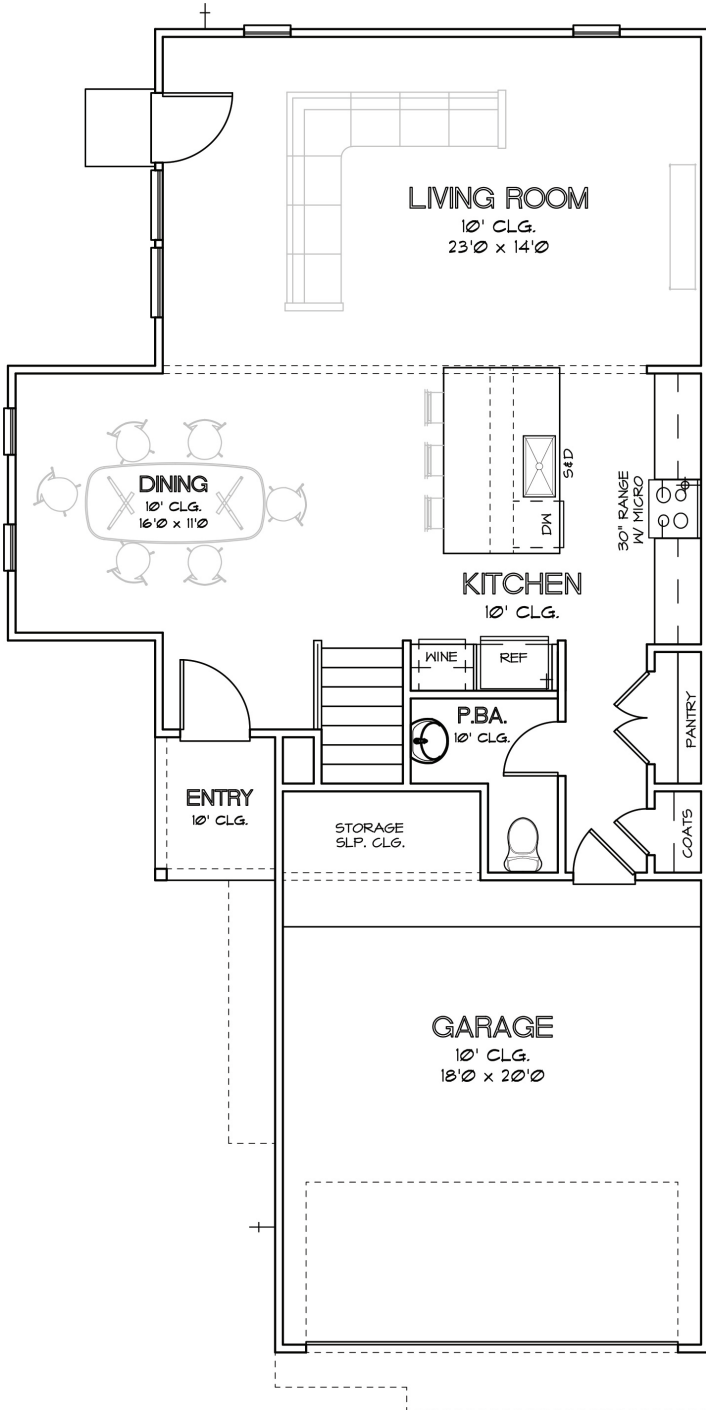
SECOND FLOOR

CHOICE IS THE ULTIMATE LUXURY

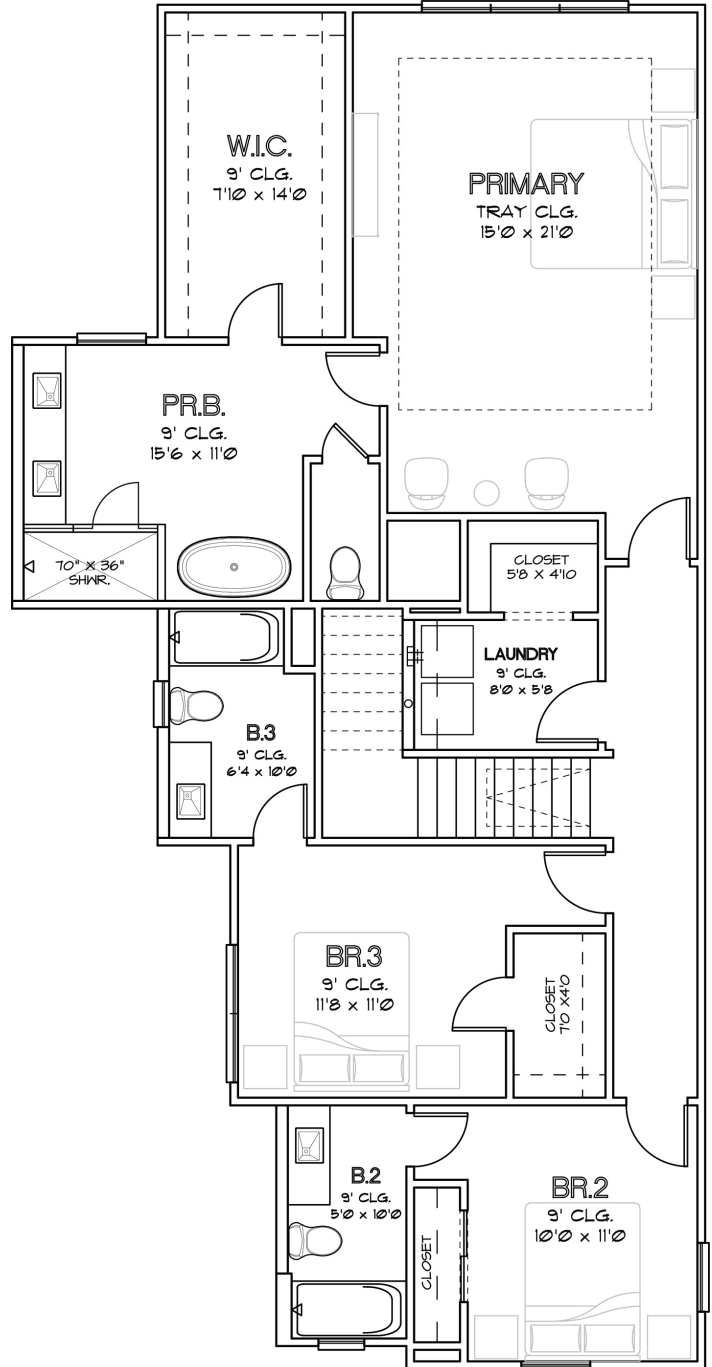


CITY HOMES
CHOICE

COLONIAL HEIGHTS
THE LONE STAR
2,220 SQ.FT.



FIRST FLOOR



SECOND FLOOR

CHOICE IS THE ULTIMATE LUXURY

